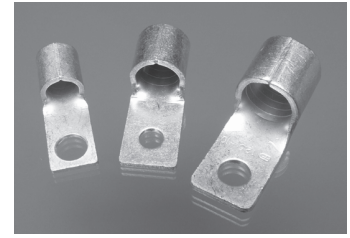
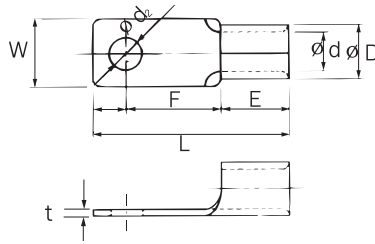


# BREAKER & CONNECTORS

## BREAKER TERMINALS

- Material : High Conductivity copper per 99.9% up with Electro-Tin Plated.

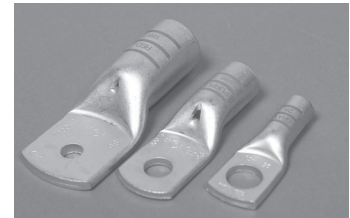
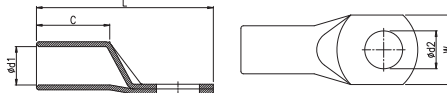


\* KS TERMINAL :  KSC2620

Wire Range		Nominal Size( mm <sup>2</sup> )	Stud Size(mm)	Part No.	Dimension ( mm )						
AWG	mm <sup>2</sup>				t	ØD	Ød	E	F	W	L
2	16.78 - 22.66	35	5	PTSB0201	1.8	13.2	9.4	13.0	17.8	14.0	39.0
			6	PTSB0202							
1/0	42.42 - 60.57	50	6	PTSB0301	2.0	15.4	11.4	18.0	20.0	16.0	46.0
			8	PTSB0302 *							
			10	PTSB0303							
2/0	60.57 - 76.28	70	8	PTSB0801	2.0	17.5	13.5	18.5	20.0	20.0	50.5
			10	PTSB0802							
			12	PTSB0803							
4/0	76.28 - 96.30	95	8	PTSB0401 *	2.6	22.0	16.4	20.0	22.0	22.0	53.0
			10	PTSB0402							
			12	PTSB0403							
250MCM	96.30 - 117.20	120	8	PTSB0501	3.2	24.0	17.6	21.0	25.0	22.0	56.5
			10	PTSB0502							
			12	PTSB0503							
300MCM	117.20 - 152.05	150	8	PTSB0601 *	3.2	26.3	19.9	26.0	22.5	22.0	60.0
			10	PTSB0602 *						25.0	61.5
			12	PTSB0603							

## STAINLESS STEEL TERMINAL LUGS

- Material : Stainless Steel(V2A)
- Temperature Stability up to 400°C Factor
- Use where weathering, corrosion and aggressive environmental is required.



Wire Range Metric (mm <sup>2</sup> )	Part No.	Stud size (xx)	Dimension(mm)						
			Ø d2	W	Ø d1	C		L	
						S	L	S	L
10	PPSS-010-xx	05	5.4	9.5	4.6	15	21	33	39
		06	6.4						
16	PPSS-016-xx	05	5.4	10.5	5.5	15	21	33	39
		06	6.4						
25	PPSS-025-xx	05	5.4	13.5	7.2	17	23	40	46
		06	6.4						
		08	8.4						
35	PPSS-035-xx	05	5.4	16	8.5	20	26	46	52
		06	6.4						
		08	8.4						
		10	10.5						
50	PPSS-050-xx	05	5.4	17.5	9.5	20	35	50	65
		06	6.4						
		08	8.4						
		10	10.5						
		12	13.0						
70	PPSS-070-xx	05	5.4	21	11.2	22	35	54	67
		06	6.4						
		8	8.4						
		10	10.5						
		12	13.0						
95	PPSS-095-xx	8	8.4	24.5	13.3	29	40	69	80
		10	10.5						
		12	13.0						
		14	15.0						
		16	17.0						