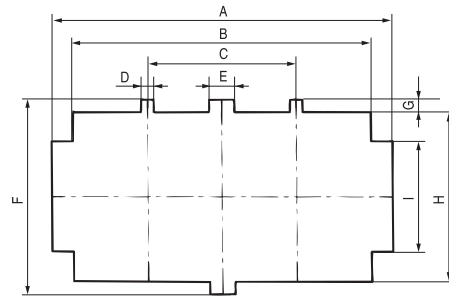


φ 1.8 CONNECTOR

● Pannel Hole Sizes



Applicable panel thickness : 0.8~2.4mm

Poles	Part Number	Panel hole dimension(mm) Tolerance ±0.1								
		A	B	C	D	E	F	G	H	I
2	DARH1.8-02	18.9	13.3	10.0	1.5	4.0	10.2	1.2	7.9	5.8
3	DARH1.8-03	24.9	19.3	12.0	1.5	4.0	10.2	1.2	7.9	5.8
4	DARH1.8-04	18.9	13.3	10.0	1.5	4.0	16.8	1.2	14.5	9.4
4	DARH1.8-04T	30.9	25.3	13.8	15	4.0	10.2	1.2	7.9	5.8
6	DARH1.8-06	24.9	19.3	12.0	1.5	4.0	16.8	1.2	14.5	9.4
9	DARH1.8-07	24.9	19.3	12.0	1.5	4.0	23.4	1.2	21.1	12.4
12	DARH1.8-12	30.9	25.3	13.8	1.5	4.0	23.4	1.2	21.1	12.4
15	DARH1.8-15	36.9	31.3	13.8	1.5	4.0	23.4	1.2	21.1	12.4

● Terminals

PART NO.	Wire range AWG(mm)	Dimension (mm)			Type	Q'ty Reel
		L	E	W		
HR180-1	26-24 (0.13-0.52)	17.8	8.0	2.9	Fig 1.	6,000
HR180-2	22-20 (0.13-0.52)	17.8	8.0	2.9		6,000
HR180-3	18-14 (0.75-2.0)	17.8	8.0	2.9		3,000
HR180-4	20+20 20+18 20+18 18+18	17.8	8.0	2.9		2,500
HP180-1	26-24 (0.13-0.52)	20.6	7.7	1.8	Fig 2.	6,000
HP180-2	22-20 (0.13-0.52)	20.6	7.7	1.8		6,000
HP180-3	18-14 (0.75-2.0)	20.6	7.7	1.8		3,000
HP180-4	20+20 20+18 20+18 18+18	20.6	7.7	1.8		2,500

Thickness : 0.3mm Material : Fig 1. Copper Alloy / Pre-Tin
Fig 2. Brass / Pre-Tin

● Housing

Poles	Plug housing for female terminal	Receptacle housing for male terminal
1	DAPH 180-01 	DARH 180-1

φ 1.8 CONNECTOR

Housing

Poles	Plug housing for female terminal	Receptacle housing for male terminal
2	DA PH 180-02 	DARH 180-02
3	DA PH 180-03 	DARH 180-03
4	DA PH 180-04T 	DARH 180-04T
4	DA PH180-04 	DARH 180-04
6	DA PH 180-06 	DARH 180-06
9	DA PH 180-09 	DARH 180-09
12	DA PH 180-12 	DARH 180-12
15	DA PH 180-15 	DARH 180-15